

Infinity Prop Instructions

A Few Notes:

- 1) If you haven't already you should review how to install reflective mirror film on glass. We will be using plexiglass in this build and there are no instructions in this document regarding this step.

Infinity Prop Instructions

Tools Required

- Quick Square
- Drill with 5/32" and 1/8" Drill Bits
- Phillips Bits #1 and #2 with Impact Drill or Phillips #1 and Phillips #2 Screwdrivers
- 8-32 Tap
- Diagonal Pliers
- Wire Strippers
- Quick Square or Combination Square
- Box Cutter
- Measuring Tape

Tools Optional – Especially if You are Building This without an Extra Set of Hands

- 24" Bar Clamp
- "C" Clamp
- Tie Down (at least 90")



Infinity Prop Instructions - **Step 1: Installing Film on Plexiglass**

Install window film to plexiglass

Set aside to start drying

Infinity Prop Instructions - **Step 2A: Prep top and bottom of Infinity Box**

- Pilot 4 to 5 holes down each side of the top and bottom (Figures 2A-1, 2A-2, and 2A-3)
Use the 5/32" drill bit
The holes should be between 0.2" and 0.25" from the edge of the top/bottom
- Install (start) a #4 x 1" in each hole (Figure 2A-3)
- Set aside for Step 3

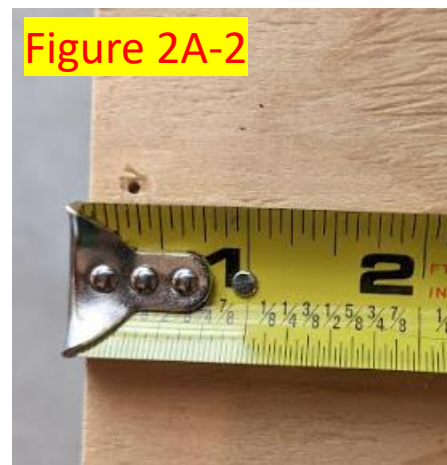


Figure 2A-3



Infinity Prop Instructions - Step 2B: Install Electrical Box to Side Panel

- Take the light fixture and attach the glass
Move it around on the side you want to get a feel where it should be placed (Figure 2B-1)
- Strike a line from the top of the side panel exactly $\frac{1}{2}$ the distance from the inside of the routed slot to the front edge (Figure 2B-2)
- From the top edge mark where you want the light fixture (in this case $5\frac{1}{2}$ ")



Figure 2B-1

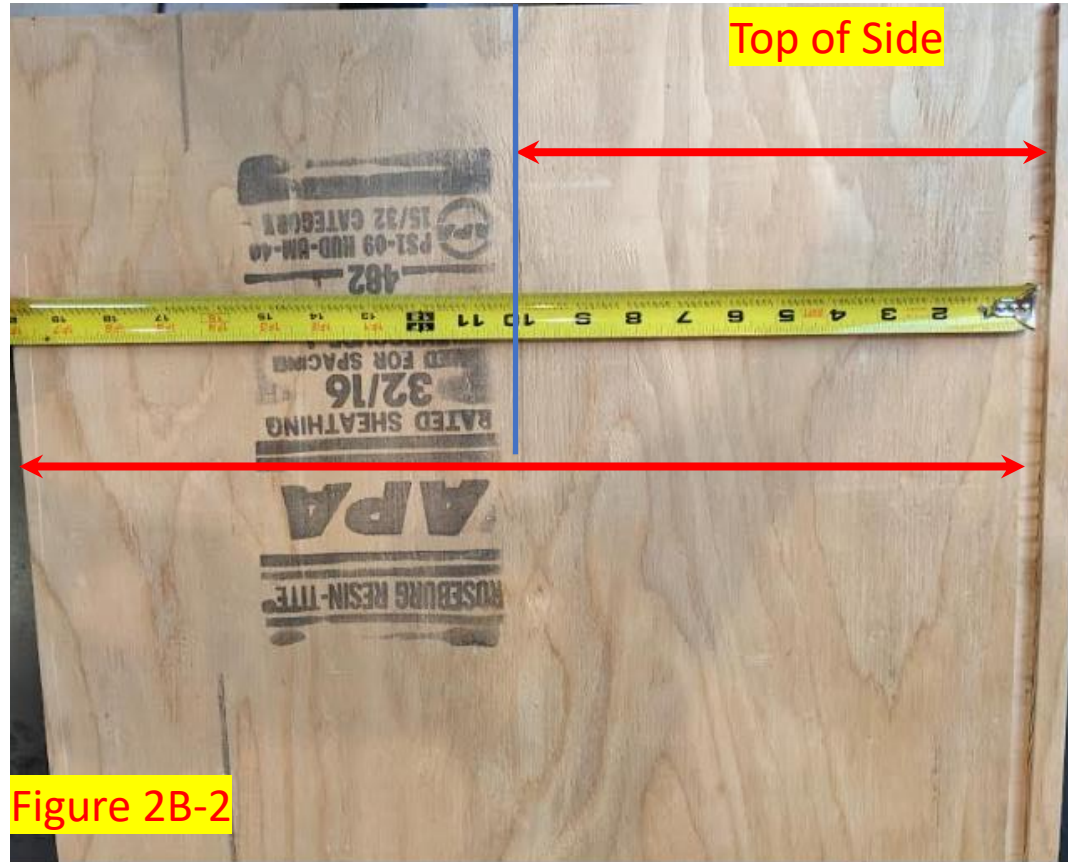


Figure 2B-2



Figure 2B-3

Infinity Prop Instructions - Step 2B: Install Electrical Box to Side Panel

- Cut a 4" hole into the side centered at your selected location. A 4" hole saw will be available. (Figure 2B-4)
- Insert the 4" electrical box through the 4" hole (Figure 2B-5)

Be sure the tabs are at the bottom of the screw before trying to put the electrical box in the 4" hole (Figure 2B-6)

Recommendation – Tap the holes in the electrical box with an 8-32 tap before you assemble the infinity box in Step 3



Figure 2B-4



Figure 2B-5

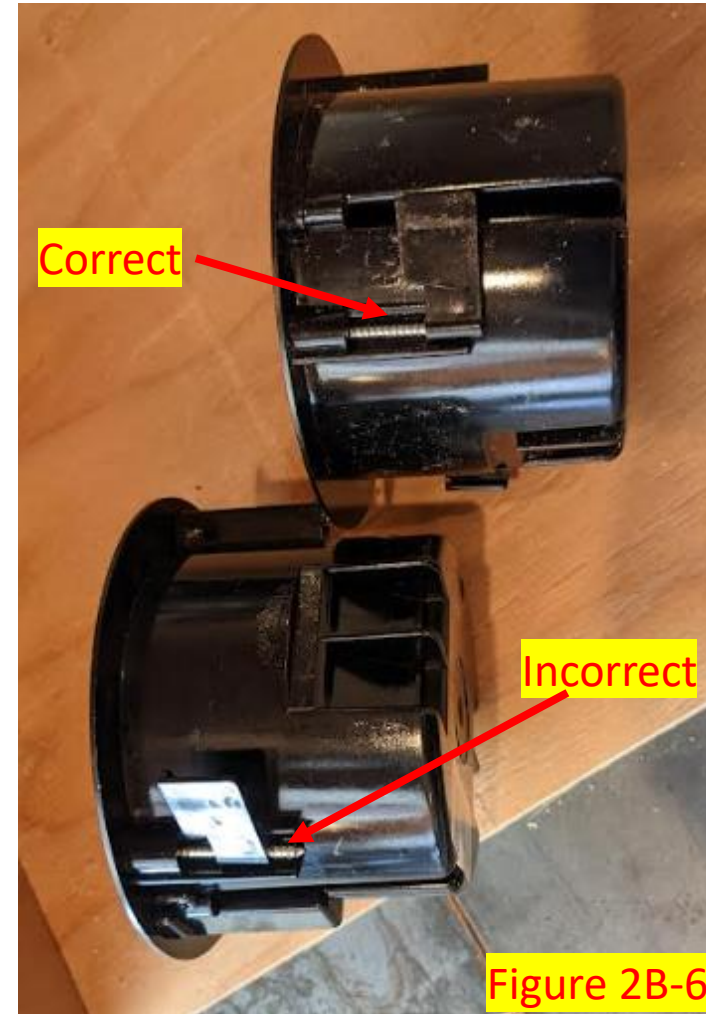


Figure 2B-6

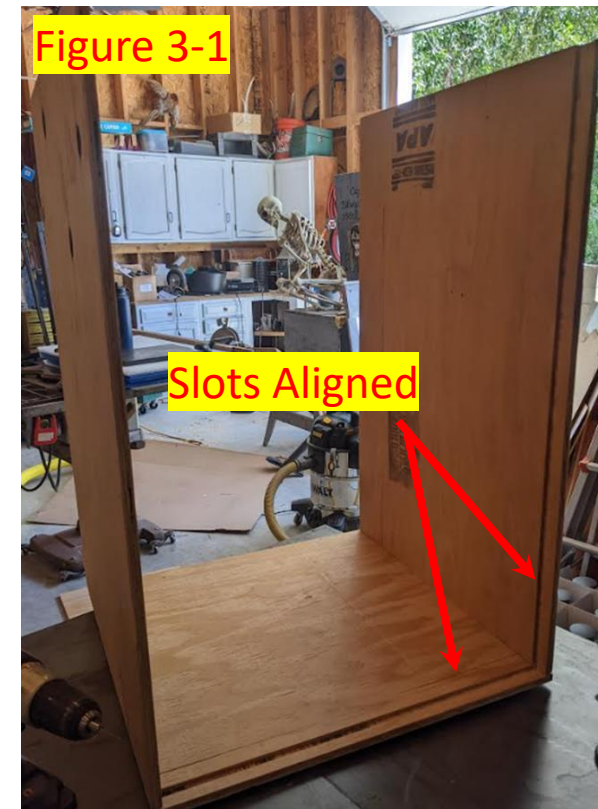
Infinity Prop Instructions - **Step 3: Building the Infinity Box**

Note – Hopefully all four sides will fit together well as well as the mirror and mirror backing..... No guarantee. We may have to do some adjustments on the fly

Note – I built the infinity box before installing the electrical box so the pictures do not reflect that the electrical box is already installed. I also built this box without help so I did not get a lot of pictures of the early parts of this step.

Note - This part really goes better if you have someone to help hold the sides while you build the Infinity Box

- Take both sides (if possible) and stand them vertical:
 - with the electrical box closest to the ground and
 - with the routed slots parallel to each other
- Take the bottom (prepared in Step 2A) and place it on the sides aligning the slots in the bottom with the slots on the sides
- Carefully drill the screws into the side walls and turn the assembly right side up (Figure 3-1)



Infinity Prop Instructions - Step 3: Building the Infinity Box

- Insert both the mirror and mirror backing into the back of the infinity box seating into the slot on the bottom (Figures 3-2 and 3-3)
- With help or using a tie-down or rope pull the sides in ensuring the mirror and backing seat in the side slots (Figure 3-4)



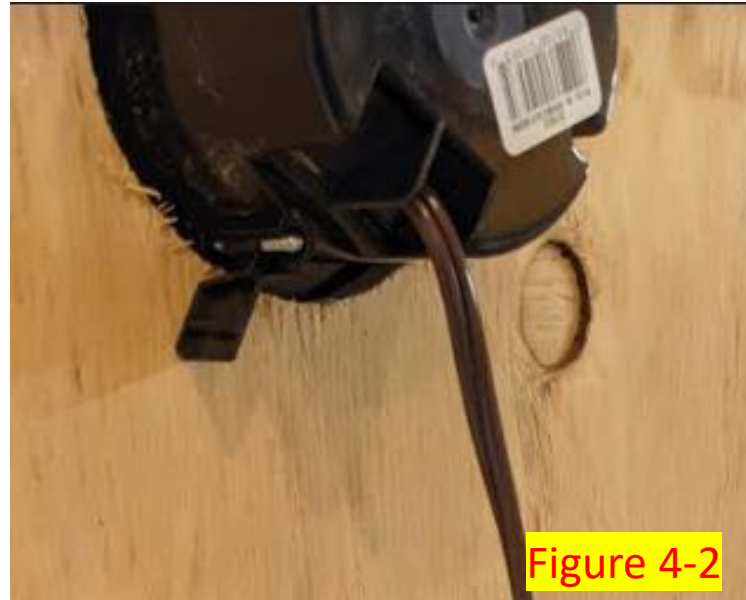
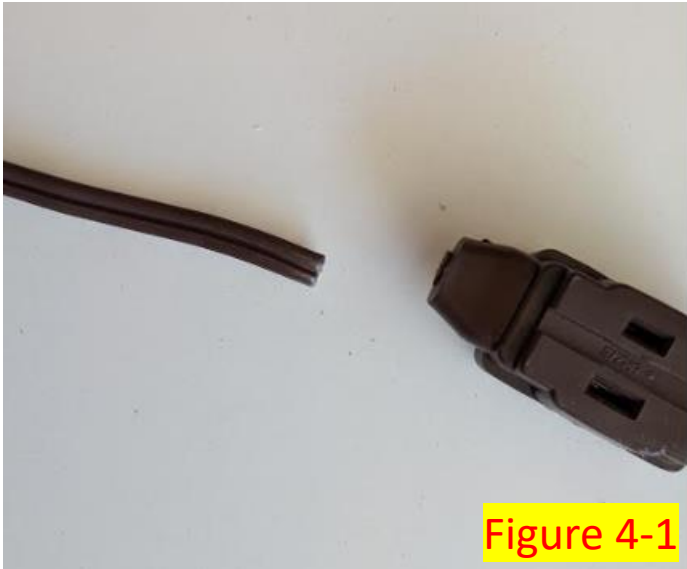
Infinity Prop Instructions - Step 3: Building the Infinity Box

- Attach the preassembled top to the rest of the box. In this case I used bar clamp to provide a little extra leverage to line the edge of the top up with the side (Figures 3-5 and 3-6)
- Not everything is perfect as a small gap was visible when all was attached.(Figure 3-7)



Infinity Prop Instructions - Step 4: Wiring the light

- Cut the receptacle end off the extension cord (Figure 4-1)
- Using a box cutter or other blade separate the two wires for about 6". Do not strip the wire until the next step is completed
- Push the wire through one of the four positions on the back of the electrical box. Figure 4-2)
- Now strip about 1/2" off of each wire. (Figure 4-3)



Infinity Prop Instructions - Step 4: Wiring the light

Note – The wide prong is neutral and the narrow prong is hot (Figure 4-4). The hot wire has lettering on it, while the neutral wire has no lettering on it.



Figure 4-4

- Install the mounting bracket (Figure 4-5) If you pre-tapped these back in Step 2B this will be really easy, otherwise plan on ruining the provided screws.
- Rotate the fixture mounting bracket so it is parallel to the top/bottom of the box. (Figure 4-6)

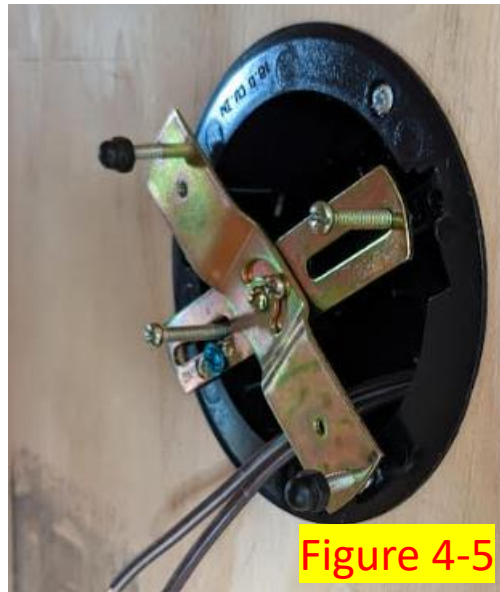


Figure 4-5



Figure 4-6

Infinity Prop Instructions - Step 4: Wiring the light

- Connect the fixture's wiring to the extension wire using the fixture's provided wire nuts. (White to no lettering, black to lettering)
- Attach the fixture to side of the infinity box, install a light (not provided) and re-install the glass cover (Figure 4-7)

Infinity Prop Instructions - Step 5: Installing the plexiglass

- No pictures here. You should have ten (10) aluminum brackets; two each for the top and bottom and three each for each side.
- Place the plexiglass with mirror film to the inside of the box
- Using the brackets and 2 - #4 x ½" screws per bracket attach the plexiglass to the front of the infinity box.



Congratulations. You now have a working infinity box. Feel free to experiment and decorate as you desire.